



SUPPORT SYSTEM

**bani bast pars**

design & production of  
installations & architectural  
modular supports



**General Catalog**

Rev. 1



## Introduction

### About bani bast pars (bbp) group

The bani bast pars group with the brand of **bbp**, with the endeavor of a number of experts in the field of industry and engineering, started its activity in 2017 with the focus on designing and producing new products in the building industry.

At the first step, considering the needs of the building industry for installations and architectural modular supports and importing these products, it was decided to design and produce this products.

Producing and engineering based on the cutting-edge standards also providing technical and engineering services is one of the main goals of this group.

Another considerable point for the managers of this group is regarding the local situations of the projects also points of design, supply and performance of the products in the projects.

Job creating for the territory youth and providing the needs of the installations and architecture in construction with the state of the art technology is another important purpose of this group.

The products of this group include pipe clamps, profiles, fittings and all support installations.



Price

Safety

Speed

Beauty

## Advantage of Modular Support

- Quick and Easy Installation
- No Need for Welding, Drilling and Coating
- Beautiful Appearance
- Ease of Repair and Modifications
- Corrosion Resistance due to Galvanized Coating
- High Reliability due to Design and Calculation Procedures
- Possibility of Various Equipments Installations

# Projects

Iran Parliament Project

## Summary of Projects Using bbp Modular Supports

- Iran Parliament (Tehran)
- Mashhad Mall (Mashhad)
- Atlas Mall (Tehran)
- Green Mall (Tehran)
- Shohada Hospital (Tehran)
- Martyr Foundation Building (Tehran)
- WinTek Plant (Tabriz)
- TCI Cener (Mashhad)
- The Aquarium Project (Anzali)
- Iran Mall (Tehran)
- Other Projects...





Mashhad Mall Project

# Projects

## Summary of Projects Using bbp Modular Supports



Martyr Foundation Building



Mashhad Mall



Izadyar H.C. Building



Shohadaye-Tajrish Hospital



# Production

## Equipments and Capabilities of the Production Line

The products of the group are licensed from the ministry of industries and mines and all machinery and equipment in production lines are calibrated and certified. Also all production line personnel are selected from well-experienced people with valid certificates.

Equipment	
2 Roll Forming Machines	30 Hydraulic and Hitting Press Machines
2 Guillotine Cutting Machines	Molding Workshop
Number of Bending and Welding Machines	1 Break Press Machine

In addition to the production department, the quality control department and laboratory also control input raw materials, during production and after production and then issue documents confirming to the standard. The departments in cooperation with the technical and engineering department, will coordinate the necessary arrangements to send the product to validated laboratories in order to obtain required approvals.





**Production**

**Equipments and Capabilities of the Production Line**





## Engineering

### Engineering Department Services

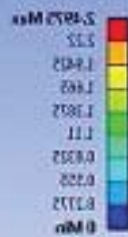
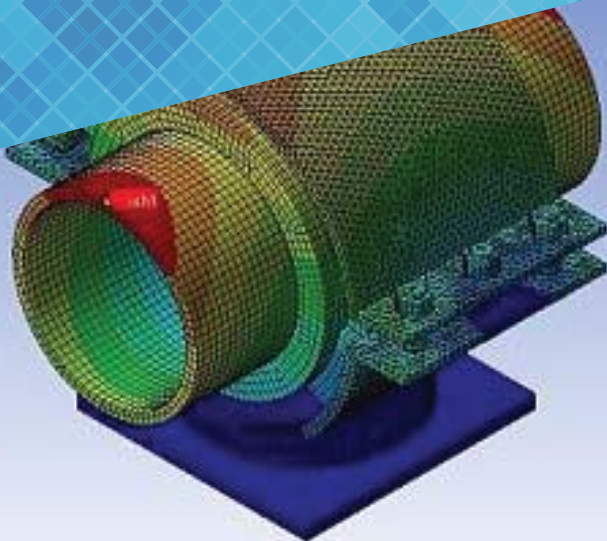
This department along with well-experienced staff provides services in production, design and performance.

Before production, all pieces get modeling and analyzed by sorts of 3D softwares. After design process, the piece is produced in the factory and after the required tests and approvals will be provided for use.

One of the key points in use and implementation of installations and architectural supports is their precise design in accordance with local and Int'l standards, taking into account the gravity and seismic conditions at the project site. This is done by the technical team using the most up to date softwares and instructions.

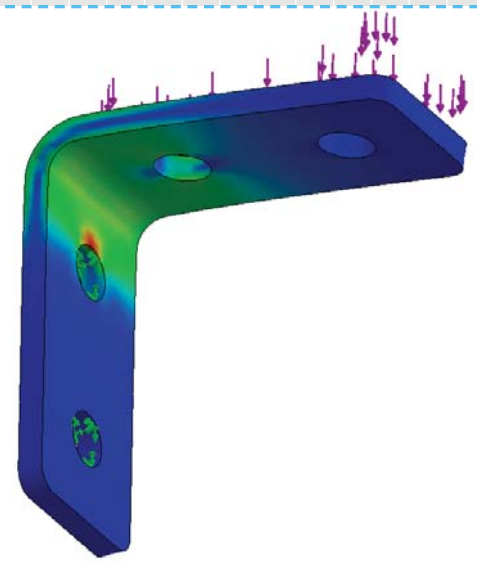
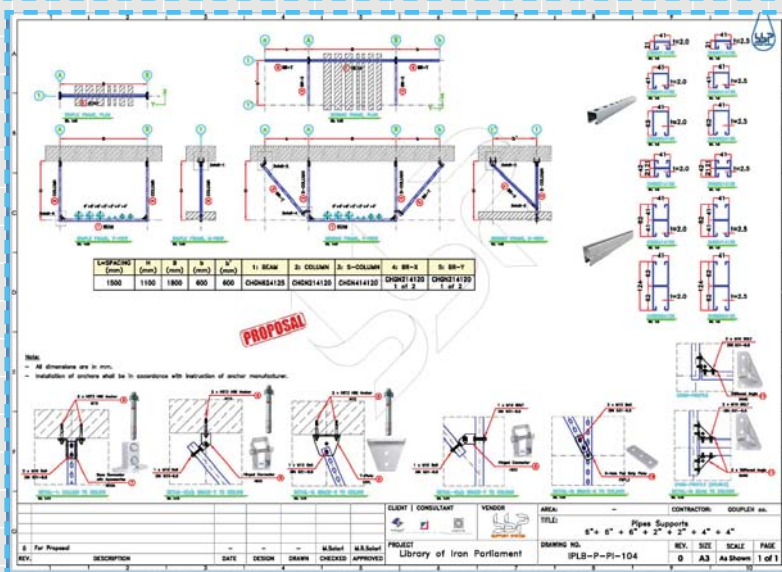
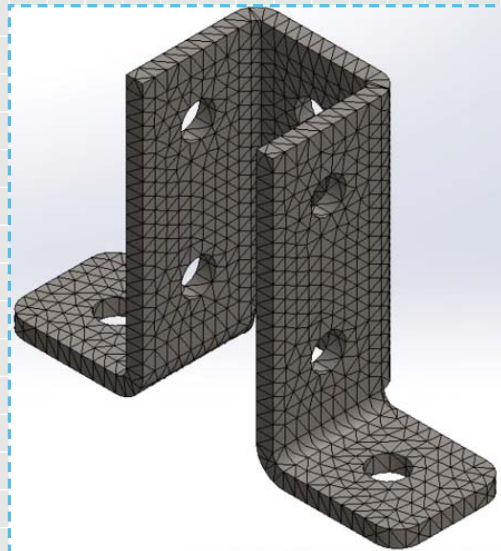
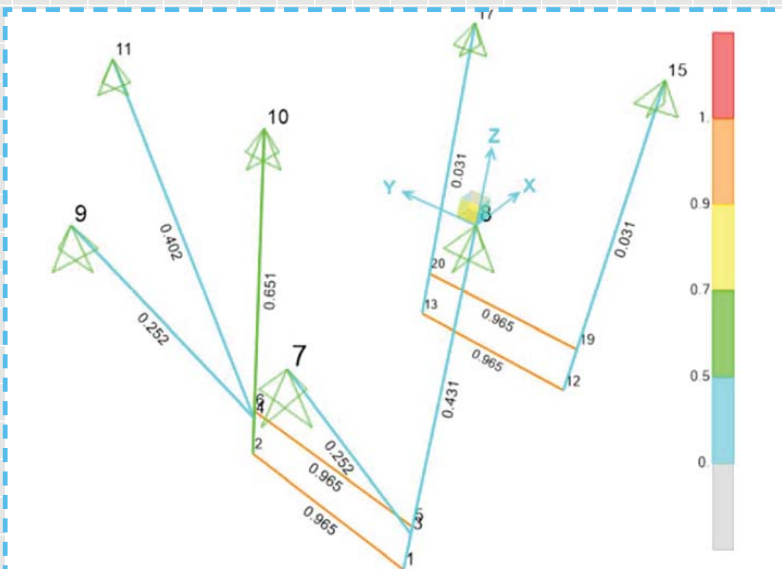
The department has also a number of experienced and capable teams in the field of implementation of the mentioned supports, which in case of need are ready to provide crucial training in the project.

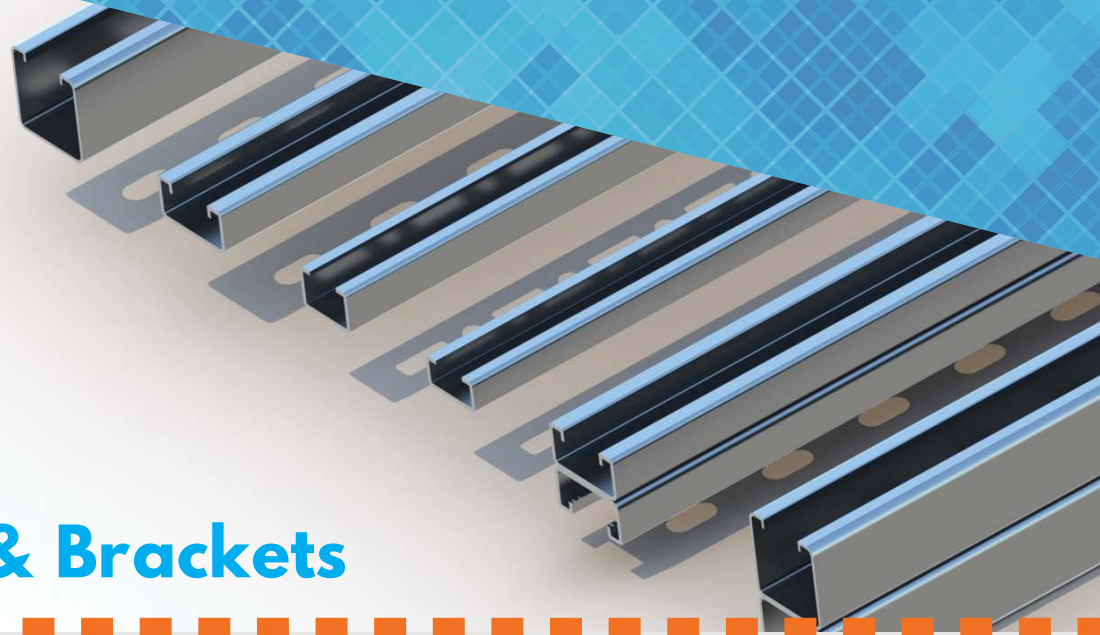




# Engineering

## Engineering Department Services





# Profiles & Brackets

## Pre-Galvanized Steel Profiles and Brackets



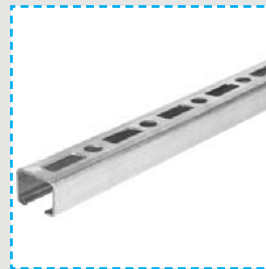
**Double G-Bracket  
CBGD**



**G-Bracket  
CBGN**



**Double G-Profile  
CHGD**



**C-Profile  
CHCN**



**G-Profile  
CHGN**

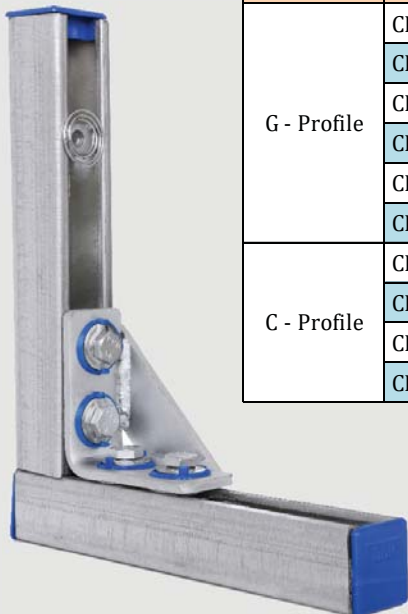
Profile	Part No.	Width (mm)	Height (mm)	Thickness (mm)
		D	H	t
G - Profile	CHGN214120	41	21	2.0
	CHGN214125	41	21	2.5
	CHGN414120	41	41	2.0
	CHGN414125	41	41	2.5
	CHGN624120	41	62	2.0
	CHGN624125	41	62	2.5
C - Profile	CHCN153010	30	15	1.0
	CHCN153015	30	15	1.5
	CHCN203010	30	20	1.0
	CHCN203015	30	20	1.5



**G-Profile End Cap  
ECPG**



**Duct Flange Profile  
DUFL**





# Pipe Clamps

## Pipe Clamps and Hangers in Various Sizes



**Ceiling Pipe Clamp  
CPCN/CPCR**



**Wall Pipe Clamp  
WPCN/WPCR**



**Long Base P.Clamp  
LPCN/LPCR**



**Adjust. Pipe Clamp  
APCN/APCR**



**Pipe Clamp  
PLCN/PLCR**



**Riser Clamp  
RCN/ROCR**



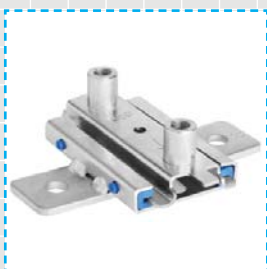
**Pipe Strap  
PSTN/PSTR**



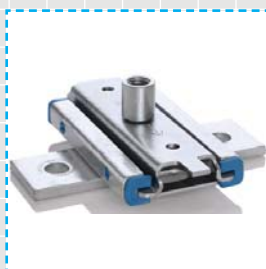
**Clevis Hanger  
CLHN/CLHR**



**Sprinkler Hanger  
SPHN/SPHR**



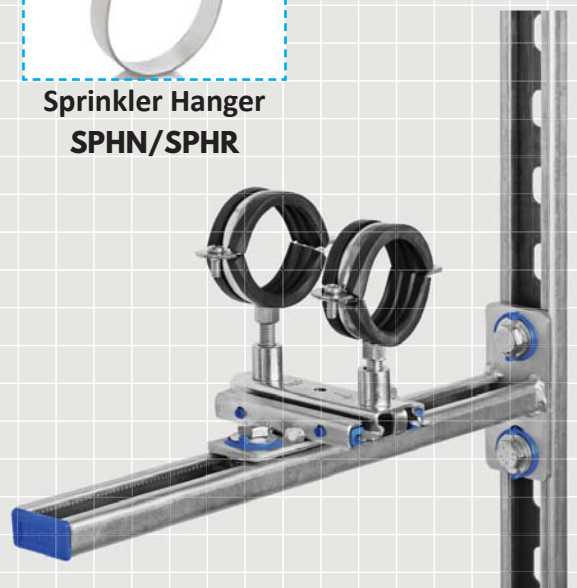
**Slider, Double  
SLDO**



**Slider, Single  
SLSI**



**U-Bolt  
UBLN**



# Fittings & Accessories

All Types of Connection Parts & Fittings



Hinged Base  
**HBAS**



Heavy Hinged Base  
**HBHN**



Short Base Connector  
**BSCN**



Base Connector  
**BCON**



Heavy Duty Base  
**BHCN**



M.Stiffened Angle  
**SANG2**



W.Stiffened Angle  
**SANG1**



Hinged Connector  
**HICO**



Rod Connector  
**TRCO**



T-Plate  
**VTPL**



# Fittings & Accessories

All Types of Connection Parts & Fittings



L-Plate, 2H  
VLPL2



Inclined Plate, 135  
ILPL4135



Inclined Plate, 45  
ILPL3060



Flat Strip Plate, 3H  
FSPL3



Flat Strip Plate, 4H  
FSPL4



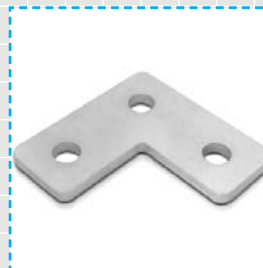
Double L-Plate  
DLPL



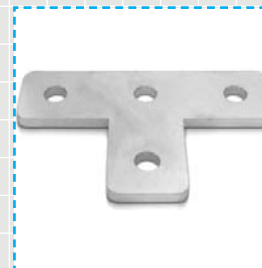
L-Plate, 4H  
VLPL4



L-Plate, 3H  
VLPL3



Flat L-Plate  
FLPL



Flat T-Plate  
FTPL



U-Plate  
USPL



# Fittings & Accessories

All Types of Connection Parts & Fittings



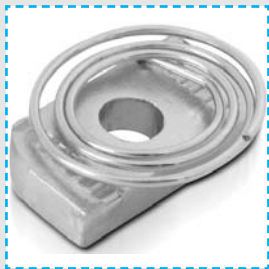
Easy Nut  
EANU



Nut with Plastic  
PLNU



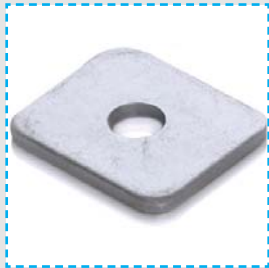
Long Spring Nut  
LSNU



Short Spring Nut  
SSNU



G-Profile Nut  
PRNU



Flat Square Washer  
FSWA



B.Washer w. Plastic  
BPWA



Beveled R.Washer  
BRWA



Flat Round Washer  
FRWA



U-Washer  
USWA



Long Washer  
LOWA



Beveled S.Washer  
BSWA



## Fittings & Accessories

All Types of Connection Parts & Fittings



Extension Nut  
EXNU



Hex. Nut  
HXNU



Hex. Bolt  
HXBO



Flange Angle  
DUAN



Beam Clamp  
BECL



Threaded Rod  
TROD



