



rad teb

N a g h s h e J a h a n

Stainless Steel Hospital Equipment

History of RadTeb Naghshe Jahan Engineering & Technical Co.

With over 50 years of experience, RadTeb Naghshe Jahan Engineering & Technical Co. has been activated in manufacturing hospital furniture products and equipment. The idea of expanding the scope of activities and grab a larger share of the market was emerged since 2007, and then in 2008 by changing in the approach and reconstructing the board of members, a huge leap was happened in variability of our products. In recent years, RadTeb Naghshe Jahan Co. has prioritized high quality as its activities. By accurate planning and using continuous improvement approach RadTeb Naghshe Jahan Co. could improve quality in line with customers need as well as adding to the variety of products in a way so that a full range of hospital stainless steel equipment are offered with over 100 products models. In order to guarantee product quality and customer satisfaction, RadTeb Co. in 2011 obtained Certificate ISO13485:2003 in manufacturing medical equipment and furniture and also ISO9001:2008 in Quality Management.

Active presence in a few local exhibitions caused our products to be in a valuable position among experts and customers so that now many hospitals in Iran are using our products. One of the honors of our company was sufficed to the fact that we could win an award from the very valuable hands of Prof. Khodadoust, the world's Senior Ophthalmologist, in 8th Fars International Exhibition.

Benefiting from management knowledge, exploration opportunities and using available capacities brought about top ranked entrepreneur in Isfahan Province by efforts of RadTeb Co. management in "Year of National Production, Supporting Labor and Iranian Capital"; this honorable award was received by the Iranian Minister of Cooperatives, Labor and Social Welfare and Governor of Isfahan Dr. Zaker Esfahani.





New Vision of RadTeb Naghshe Jahan Co.

In 2020 vision, RadTeb will be the largest high-Tech manufacturer of hospital stainless steel equipment in Iran and largest exporter of such products to neighboring, African and European countries.



Mission Statement

We are a very innovative and successful company in manufacturing types of hospital furniture equipment and we are unique and self-sufficient by taking advantage of technologies in line with initiatives and synergy of the personnel of R&D and technical engineering dept.

We highly believe our company offers service for the healthcare of Iran and also other neighboring countries; in fact providing services to customers is our strength and it is our mission to test new development ways using modern technologies and creativity in products for increasing customer satisfaction and shareholders.

Our company's reputation is due to our good and honest relations with our customers; we are committed to ethical principles and care about customer; and our strong staffs are the biggest assets and benefit and we try our best for improving their professional and personal life status. Socially we are responsible and for the improvement of our society's healthcare and sanity we offer our products according to the ISO 2003: 13485 with keeping and improving quality with a lower price than our competitors.



PSK31



Clinical Sink

- Dim. (Height × length × width) 65 × 47 × 47 cm
- Made of seamless and integrated stainless steel 304
- Capability of utilizing in solid utility room for bottle suction evacuation
- Capability of using flusher for unpleasant smell prevention in area
- Equipped with flush tank and related taps

PSK32

Double-Step Operating Equipment Washing Sink

- Dim. (Height × length × width) 115 × 167 × 53.5 cm
- Made of stainless steel 304
- Capability of utilizing in solid utility room, hospital CSSD department and CSR section in clinics
- Capability of inserting tray and shelf on top sides for drying process of tools and equipment
- Capability of inserting air and water gun
- With soaking tool box



PSK35

Triple Step Equipment Washing Unit (Ultrasonic Cleaning Unit)

- Dim. (Height × length × width) 90 × 190 × 64 cm
- Made of seamless and integrated stainless steel 304
- Capability of utilizing in solid utility room, hospital CSSD department and CSR section in clinics
- Equipped with air gun or oil-free air compressor
- Capability of inserting ICU equipment with washing gun
- Having two washing bowls and one special bowl plus a basket for soaking and disinfection process
- Capability of inserting protection and drier set unit on outlet part of air for sterilizing and drying gun exhausting air
- Equipped with cabinet door damper
- With upper shelf and roof for drying surgical tools and accessories
- With upper shelf and roof for drying surgical tools and accessories
- Facilitated with moving protective shields for preventing from water splash to user



PSK36A

Single Tap Scrub Sink with New Design

- Dim. (Height × length × width) 200 × 90 × 63 cm
- Made of seamless and integrated stainless steel 304
- Capability of utilizing for preadmission of operating room and other sections for hand scrubbing
- Capability of utilizing for preadmission section of isolation rooms
- Capability of pedal or automatic taps utilization

PSK34A

Single Tap Scrub Sink



- Dim. (Height × length × width) 94 × 83 × 57 cm
- Made of seamless and integrated stainless steel 304
- Capability of utilizing in preadmission of operating rooms and other sections for hand scrubbing
- Capability of pedal or automatic taps utilization
- With water temperature and pressure adjustment lever
- With soft opening panel door for easy access to sink installation
- Having unique design for preventing from water splash

PSK34B

Double Tap Scrub Sink

- Dim. (Height × length × width) 94 × 125 × 56 cm
- Made of seamless and integrated stainless steel 304
- Capability of utilizing for preadmission of operating room and other sections for hand scrubbing
- Capability of pedal and automatic taps
- With water temperature and pressure adjustment lever
- Having soft opening panel door for easy access to sink installation
- Having unique design for preventing from water splash



PTR27

Basket Trolley Specialized for CSSD and Laundry



- Dim. (Height × length × width) 90 × 100 × 60 cm
- Made of stainless steel 304
- Capability of utilizing in CSSD and CSR sections of hospitals and clinics
- Having special design for tolerating 400 kg loading weight
- Equipped with wire basket structure with a special design
- Having four special hospital casters including two locking casters

PTR30

Surgical Instrument Trolley

- Dim. (Height × length × width) 100 × 90 × 46.5 cm
- Made of stainless steel 304
- Capability of utilizing in operating rooms and emergency departments
- To store contaminated instruments in order to increase surgical tool lifetime and prevent from infection and contamination on dirty tools
- With two separated isolated containers for storing usual and micro-surgical tools separately
- Having four special hospital casters including two locking casters



PTR25

Laundry Collection Trolley

- Dim. (Height × length × width) 95 × 117.5 × 54 cm
- Made of stainless steel 304
- Capability of utilizing for dirty linen collection and transporting clean linen for beds preparation
- Equipped with compartment washable fabric made of coated plastic
- Facilitated with two separate parts for clean and dirty linen
- Having six special hospital casters including two locking casters



PTR26

Hamper Laundry Collection Trolley

- Dim. (Height × length × width) 95 × 90 × 60 cm
- Made of stainless steel 304
- Capability of utilizing for dirty and uncleaned clothes in different units of hospital
- Equipped with compartment washable fabric made of coated plastic
- Having four special hospital casters including two locking casters





PTR33

Conventional Trolley

- Dim. (Height × length × width) 85 × 75 × 50 cm
- Made of stainless steel 304
- Capability of utilizing in operating rooms, utility solid and cleanroom, all hospital departments and emergency sections
- Including two floors equipped with three-sided protection bars
- With four special hospital casters including two locking casters

PTR34

Conventional Trolley

- Dim. (Height × length × width) 60 × 90 × 90 cm
- Made of stainless steel 304
- Capability of utilizing in operating rooms, utility solid and cleanroom, all hospital departments and emergency sections
- Including two floors equipped with three-sided protection bars and guards
- With four special hospital casters including two locking casters



PTR31

Conventional Trolley



- Dim. (Height × length × width) 75 × 35 × 35 cm
- Made of stainless steel 304
- Capability of utilizing in operating rooms, utility solid and cleanroom all hospital departments and emergency sections
- Including two floors equipped with three-sided protection bars
- With four special hospital casters including two locking casters

PTR32

Conventional Trolley

- Dim. (Height × length × width) 75 × 60 × 40 cm
- Made of stainless steel 304
- Capability of utilizing in operating rooms, utility solid and cleanroom, all hospital departments and emergency section
- Including two floors equipped with three-sided protection bars
- With four special hospital casters including two locking casters





PTR38

Trolley with Drawer Basket

- Dim. (Height × length × width) 90 × 70 × 45 cm
- Made of stainless steel 304
- Having usage capability for CSSD and CSR sections of hospitals and clinics and operating rooms for keeping extremely small instrumental sets
- Equipped with four basket drawers with grid structure
- With four special hospital casters including two locking casters

PTR39

Sterile Equipment Transport Trolley

- Dim. (Height × length × width) 102 × 102 × 64 cm
- Made of stainless steel 304
- Capability of utilizing for CSSD and CSR sections of hospitals and other parts for collecting dirty instruments and sets and distribution of sterile sets and instruments for different departments
- Equipped with protective guards with the mean of effective product longevity increasing
- Facilitated with two doors along with lock plus 170 degree opening capability
- With four special hospital casters including two locking casters



PTR35

Single Bowl Stand Trolley



- Dim. (Height × length × width) 95 × 35 × 35 cm
- Made of stainless steel 304
- Capability of utilizing next to scrub sink, orthopedic operating theatre and emergency section
- Equipped with 5-litre movable bowl
- With star-shaped holder bar equipped with three special hospital casters and locking casters



PTR37

Double Bowl Stand Trolley

- Dim. (Height × length × width) 90 × 70 × 50 cm
- Made of stainless steel 304
- Capability of utilizing next to scrub sink or operating room as the gauze counter trolley
- Including two 5-litre movable bowls
- With star-shaped holder bar equipped with three special hospital casters and locking casters





PTR44

Emergency Trolley



- Dim. (Height × length × width) 100 × 72 × 52 cm
- Made of stainless steel 304
- Capability of utilizing in operating theatre, recovery room, emergency department, resuscitation room and other vital departments of hospital
- With special and unique design
- Equipped with lateral tray used as a drawer for medication preparation on top of trolley
- Comprised of five drawers two of which are separated with some internal shelves
- Equipped with safety-box, electrical sockets and oxygen capsule holder
- Equipped with IV pole, and defibrillator holder bar
- Having CardioPulmonary Resuscitation board implemented beneath of trolley
- Equipped with easy opening lock and sealed lock
- Comprised of main structure for longevity product increasing
- With four special hospital casters including two locking casters

PTR45

Medicine Distribution Trolley

- Dim. (Height × length × width) 90 × 80 × 50 cm
- Made of stainless steel 304
- Capability of utilizing in treatment room, emergency department and other required units
- Comprised of unique design for bilateral application
- Including 24 drawers for medicine preparation
- Equipped with medicine preparation sheet
- With two special V-shaped boxes for storing medical items such as serums
- Comprised of one longitudinal drawer on both sides of trolley
- Including safety box and storing catheters and syringes box
- With four special hospital casters including two locking casters





PTR43A

Electrocardiography Trolley

- Dim. (Height × length × width) 85 × 42 × 42 cm
- Made of steel ST12 colored with electrostatic powder coating
- Capability of transporting electrocardiography device to other hospital departments such as emergency hospital sections, operating rooms and other units of hospital
- With new MDF sheet design plus either one or two drawers
- Equipped with special cable holder for keeping ECG set wires and probes
- With four special hospital casters including two locking casters

PTR43B

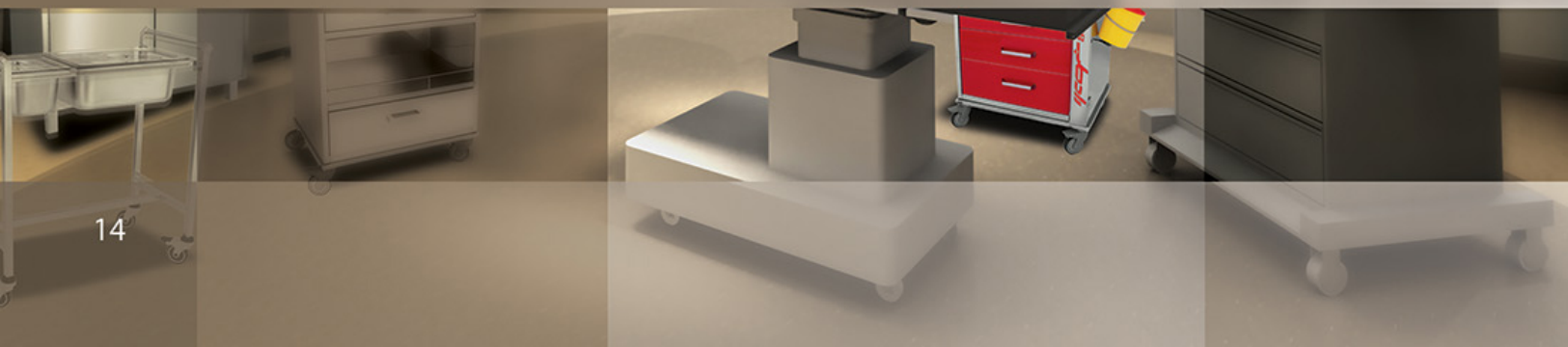
Electrocardiography Trolley

- Dim. (Height × length × width) 42 × 42 × 85 cm
- Made of stainless steel 304
- Capability of transporting electrocardiography device to other hospital departments such as emergency hospital sections, operating rooms and other units of hospital
- Including one or two new design drawers
- Equipped with special comb-shaped holder for keeping ECG set wires and probes
- With four special hospital casters including two locking casters





www.radteb.com



PTR49

Hospital Trolley



- Dim. (Height × length × width) 120 × 40 × 40 cm
- Made of stainless steel 304
- Capability of utilizing in emergency department, public and surgical spaces and other hospital units
- Including three floors plus two soft closing drawers and telescopic slides
- With guards on three sides of trolley plus a transporting handlebar
- With four special hospital casters including two locking casters

PTR50

Hospital Trolley

- Dim. (Height × length × width) 97 × 90 × 60 cm
- Made of stainless steel 304
- Capability of utilizing in emergency department, public and surgical spaces and other hospital units Including three floor plus two drawers and telescopic slides
- With guards on three sides of trolley plus a transporting handlebar
- With four special hospital casters including two locking casters





PTR55

Laundry Collection Trolley

- Dim. (Height × length × width) 95 × 54 × 54 cm
- Made of stainless steel 304
- Capability of utilizing in hospital departments and dirty places for collecting dirty clothes
- Equipped with compartment washable fabric made of coated plastic
- With four special hospital casters including two locking casters

PTR56

Wound Dressing Trolley

- Dim. (Height × length × width) 90 × 80 × 50 cm
- Made of stainless steel 304
- Capability of utilizing in all hospital units such as emergency, operating room and resuscitation room
- Including two floors plus two drawers
- Including normal waste bin and separated special bin for infectious waste
- With three sided protective guard on top of trolley
- With four special hospital casters including two locking casters



PTR51

Hospital Trolley



- Dim. (Height × length × width) 97 × 90 × 60 cm
- Made of stainless steel 304
- Capability of utilizing in emergency department, public and surgical spaces and other hospital unit
- Including two floors plus two drawers and telescopic slides
- With guards on three sides of trolley plus a transporting handlebar
- Capability of inserting safety box and waste bin
- With four special hospital casters including two locking casters

PTR54

Laundry Collection Trolley

- Dim. (Height × length × width) 95 × 117.50 × 54 cm
- Made of stainless steel 304
- Capability of utilizing in hospital departments and dirty places for collecting dirty clothes
- Comprised of separated spaces for collecting contaminated clothes and linen
- Equipped with compartment washable fabric made of coated plastic
- With four special hospital casters including two locking casters





PTR63

New Design Wound Dressing Trolley

- Dim. (Height × length × width) 90 × 80 × 50 cm
- Made of stainless steel 304
- Capability of utilizing for all departments, emergency, resuscitation and surgery room
- Including two upper floors plus two drawers
- With movable handle
- Including three sided protective guards on upper part of trolley
- With safety box
- With conventional bin and pedal
- Including special two-layered bin for infectious waste
- With a unique design
- With four special hospital casters including two locking casters



PTR64

Hamper Trolley with Lid

- Dim. (Height × length × width) 98 × 56 × 41 cm
- Made of stainless steel 304
- Capability of utilizing for operating room, clothes and dirty clothing collection
- Including special and washable plastic
- With two plastic lids by pedal
- With four special hospital casters including two locking casters

PTR65

New Design Medicine Trolley

- Dim. (Height × length × width) 100 × 68 × 49 cm
- Made of stainless steel 304
- Capability of utilizing in treatment room, emergency department and other units of hospital
- Including unique design by four sided optional usage
- With 20 medicine drawers in various dimensions
- With medicine preparation working table
- Including serum storing special space by easier access
- Including safety box
- With syringe and catheter storing box
- Equipped with serum preparation holder
- Including lower guard for better resistance of trolley
- Having special waste bin by pressure-sensitive slides for opening
- With movable handle
- With four special hospital casters including two locking casters





PTR60

Anesthesia Trolley

- Dim. (Height × length × width) 145 × 75 × 54 cm
- Made of stainless steel 304
- Capability of utilizing in operating rooms
- With 12 medication boxes for the process of anesthesia
- Comprised of medication preparation desk and sheet
- With one latitudinal drawer
- Including a main structure for product longevity increasing
- With four special hospital casters including two locking casters

PTR62

Dressing Trolley with Upper Drawers

- Dim. (Height × length × width) 90 × 80 × 50 cm
- Made of stainless steel 304
- Capability of utilizing for all departments, emergency, resuscitation and surgery room
- Including two upper floors plus two drawers
- With safety box and washing bowls
- Including conventional bin plus a special bin for infectious waste
- Including three sided protective guards on upper part of trolley
- With four special hospital casters including two locking casters



PFI25

Operating Room Cabinet

- Dim. (Height × length × width) 200 × 94 × 50 cm
- Made of stainless steel 304
- Capability of utilizing in operating rooms and emergency departments
- Equipped with sloped roof for hospital infection control
- Facilitated with one fixed floor and one movable floor on the top side including two stainless steel frame doors with anti-scratch and shatterproof synthetic glass
- Including two desktops
- Equipped with two drawers with telescopic slides
- With a cabinets with door damper and lock
- Facilitated with height-adjustable holders
- With four special casters including two locking casters



PFI29

Catheter Cabinet



- Dim. (Height × length × width) 200 × 97 × 57 cm
- Made of stainless steel 304
- Capability of utilizing for angiography department for storing catheters
- Including unique design by special doors
- Having the capability of hiding door after opening while using to have optimum application of product
- Including three movable axis for storing catheters
- Having 30 antenna holders for hanging catheters on axis
- Capacity for keeping 600 catheters inside it
- Facilitated with stainless steel locks with frame doors plus anti-scratch and shatterproof synthetic glass
- Including main structure for keeping the product balance and increasing the product life-time
- With four special hospital casters including two locking casters

PFI30

Laparoscopy Cabinet

- Dim. (Height × length × width) 130 × 92 × 53 cm
- Made of stainless steel 304
- Capability of utilizing for laparoscopic surgical room
- Including a unique design for storing laparoscopic tools
- Facilitated with two stainless steel door frames with anti-scratch and shatterproof synthetic glass
- Including a main structure for keeping the product balance and increasing the product life-time
- With three floors made of artificial, anti-scratch and shatterproof glass
- With four special hospital casters including two locking casters



PFI22

Sloped Roof Portable Cabinet

- Dim. (Height × length × width) 200 × 95 × 45 cm
- Made of stainless steel 304
- Capability of utilizing in operating room
- Capability of utilizing in utility solid room, cleanroom and CSSD
- Equipped with sloped roof for hospital infection control
- Facilitated with four fixed floors and one movable floor
- Equipped with main structure for high resistance
- With four special casters including two locking casters



PFI23

Operating Room Cabinet with Glass Door

- Dim. (Height × length × width) 200 × 95 × 45 cm
- Made of stainless steel 304
- Capability of utilizing in operating room
- Capability of utilizing in utility solid room, cleanroom and CSSD
- Equipped with sloped roof for hospital infection control
- Facilitated with four fixed floors and one movable floor
- Equipped with main structure for high resistance
- With two stainless steel frame doors with anti-scratch and shatterproof synthetic glass
- With four special casters including two locking casters

PTA23A

Movable Tray Mayo Table



- Dim. (Height × length × width) (80 - 120) × 60 × 40 cm
- Made of stainless steel 304
- Capability of utilizing in operating room, orthopaedic room and resuscitation room
- Including height adjusting mechanism
- With movable edged-tray
- With three special hospital casters with two locking casters

PTA23B

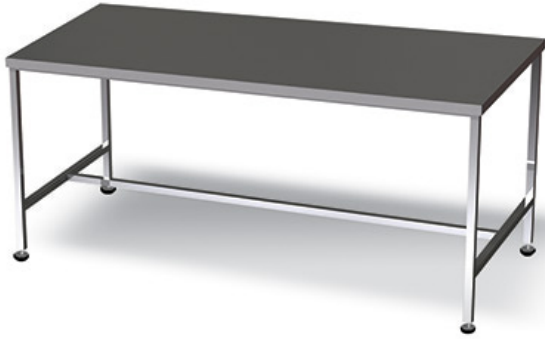
Basic Mayo Table

- Dim. (Height × length × width) (80 - 120) × 75 × 45 cm
- Made of stainless steel 304
- Capability of utilizing in operating room, orthopaedic room and resuscitation room
- Including height adjusting mechanism
- With fixed edged-tray
- With four special hospital casters including two locking casters



PTA21

One-floor Packing Desk



- Dim. (Height × length × width) 90 × 190 × 90 cm
- Made of stainless steel 304
- Capability of utilizing in CSSD and CSR sections of hospitals and clinics
- Including H-shaped bases for increasing product's strength and longevity
- Comprised of two double-layer and water-resistant sheets for hospital infection control
- A unique design with sedentary and stand-up position possibility for user
- Including height-adjustable bases

PTA22

Two-Floor Packing Desk

- Dim. (Height × length × width) 140 × 190 × 70 cm
- Made of stainless steel 304
- Capability of utilizing in CSSD and CSR sections of hospitals and clinics
- Including H-shaped bases for increasing product's strength
- Comprised of two double-layer and water-resistant sheets for hospital infection control
- A unique design with sedentary and stand-up position possibility for user
- Including height-adjustable bases



PTA28A, PTA28B, PTA28C

Full Stainless Steel Working Table



- Dim. (Height × length × width) 90 × 90 × 50 cm
- Dim. (Height × length × width) 90 × 115 × 50 cm
- Dim. (Height × length × width) 90 × 150 × 50 cm
- Made of stainless steel 304
- Capability of utilizing in operating theatre, emergency and resuscitation departments
- Capability of utilizing in CSSD and CSR for hospitals and clinics different departments, medication room, clean and treatment room
- Including two floors without protective guards
- With four special hospital casters including two locking casters



PTA24

Falcate Table



- Dim. (Height × length × width) 90 × 160 × 55 cm
- Made of stainless steel 304
- Capability of utilizing in general and specialized operating rooms
- With special design by appropriate curvature for ease of utilization
- Including upper and lower double-layer sheets for product's strength
- Having three sided guards for lower floor of product
- Including five special hospital casters with two locking casters

PTA25

Adjustable Surgical Table



- Dim. (Height × length × width) (80-120) × 90 × 60 cm
- Made of stainless steel 304
- Usable in operating rooms
- With height adjusting capability for using on surgical bed
- Facilitated with H-shaped bases with increasing of stability and balance
- With 1cm edge for three sides of table
- With four special hospital casters including two locking casters

PBD21

Full Stainless Steel Examination Bed



- Dim. (Height × length × width) 70 × 180 × 65 cm
- Made of stainless steel 304
- Capability of utilizing for medical offices in clinics and hospitals
- Capability of utilizing for emergency departments, check-up and injection rooms
- Capability of utilizing for orthopaedic rooms
- Facilitated with roll jar for using disposal bed sheet
- Equipped with basis insole made of Zellamid® which will protect bed from slipping and movement while using
- Including special mattress made of cold foam and resisting plastic
- Capability of tolerating 300 kg weight

PBD22

Simple Steel Examination Bed



- Dim. (Height × length × width) 70 × 180 × 65 cm
- Made of steel grade ST12 with electrostatic coating color powder
- Capability of utilizing for medical offices in clinics and hospitals
- Capability of utilizing for emergency departments, examination and injection rooms
- Capability of utilizing for orthopaedic room
- Including folding breaker on upper part of bed beneath patient's head
- Equipped with a hydraulic jack and movable lever to raise bed's breaker
- Facilitated with roll jar for using disposal bed sheet
- Equipped with basis insole made of Zellamid® which will protect bed from slipping and movement while using
- Including a special mattress made of cold foam and resisting plastic
- Capability of tolerating 300 kg weight

PBD23

Full Stainless Steel Folding Examination Bed

- Dim. (Height × length × width) 65 × 180 × 70 cm
- Made of stainless steel 304
- Capability of utilizing for medical offices in clinics and hospitals
- Capability of utilizing for emergency departments, examination and injection rooms
- Capability of utilizing for orthopaedic room
- Including folding breaker on upper part of bed beneath patient's head
- Equipped with a hydraulic jack and movable lever to raise bed's breaker
- Facilitated with roll jar for using disposal bed sheet
- Equipped with basis insole made of Zellamid® which will protect bed from slipping and movement while using
- Including special mattress made of cold foam and resisting plastic
- Capability of tolerating 300 kg weight





"A sample of stainless steel wall between autoclaves "

PSH21/22

Plain / Perforated Shelves

- Dim. (Height × length × width) 200 × 94 × 55 cm
- Made of stainless steel 304
- Capability of utilizing in solid utility room, hospital CSSD department and CSR section in clinics
- Capability of utilizing in sterile room and secondary sterile room
- Capability of utilizing in pharmaceutical and food warehouses
- Capability of assembling and disassembling
- Wall mounted/floor mounted capability
- Facilitated with unique design compatible with accreditation measures
- Equipped with plain and perforated sheets according to the utilization





www.radteb.com



PHK21A

Floor Portable IV Pole

- Dim. (Height × base diameter) 50 × (160 - 200 cm)
- Made of stainless steel 304
- Capability of utilizing for all units of hospitals
- Including a unique design and despite light weight , it keeps balance while moving
- 3 kg weight tolerance for each branch
- Height adjustment up to 2 meters
- With star-shaped structure base with five casters two of which with locking casters

PHK21B

Floor Portable IV Pole for Blood Transfusions and Blood Products

- Dim. (Height × base diameter) 50 × (180 - 250 cm)
- Made of stainless steel 304
- Capability of utilizing for all units of hospitals
- Including a unique design and despite light weight, it keeps balance while moving
- Capacity of 3 kg weight tolerating for each branch
- Height adjustment up to 2.50 meters
- Comprised of special blood and its related products injection branch
- With star-shaped structure base with five casters two of which with locking casters

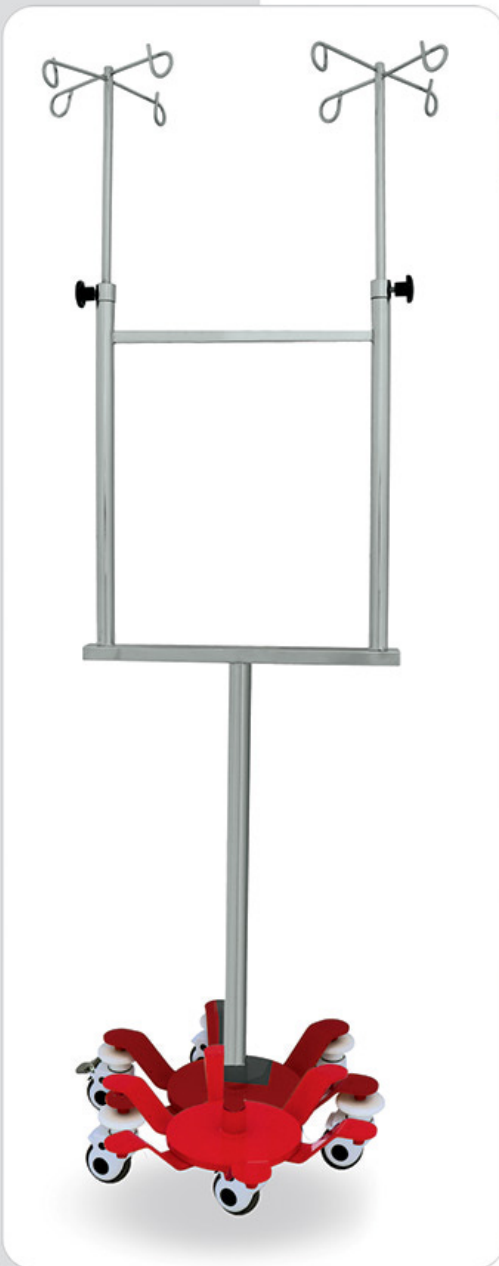


PHK23

Wall-Mounted Serum Hook



- Made of stainless steel 304
- Capability of utilizing for utility solid room and cleanroom for hanging related items
- Capability of utilizing for toilets and bathrooms for hanging serums
- Capability of utilizing in preadmission of isolated rooms



PHK27

Ceiling Serum Hanger

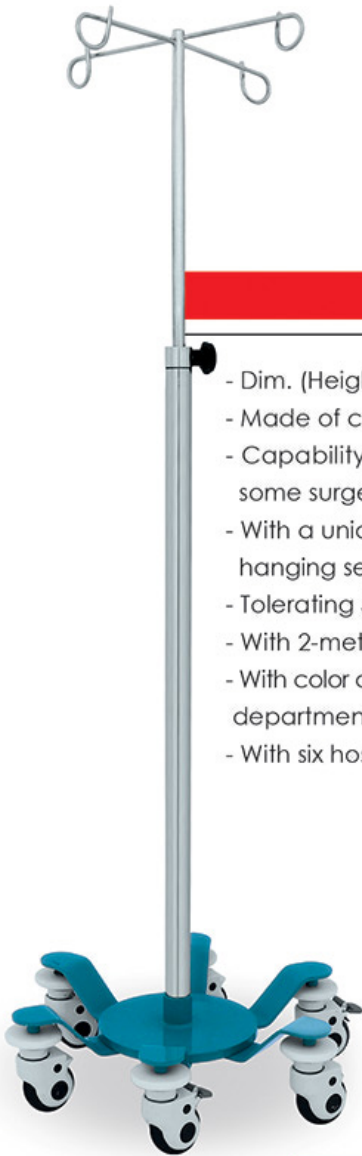
- Dim. (Height × length × width) (75 – 120) × 120 × 5 cm
- Made of combined stainless steel 304 and a special analyzed aluminum alloy
- Capability of utilizing for emergency, recovery and other hospital departments
- Capability of movement rate from equal to or greater than 1.2 meter according to customer's offer
- Height adjustability from ceiling
- Including four serum hangers

PHK26

Two-Holder IV Pole

- Dim. (Height × base diameter) (190 - 225) × 55 cm
- Made of combined ST12 and 304 steel
- Capability of utilizing for operating room, emergency and other units
- With capability of hanging high quantities of serums
- Including two separated holders and eight hooks on each rod
- With 2-meter height adjustability
- With a unique design on base part for balance keeping while moving
- With color category variability for base part for assigning to different departments of hospital
- With six hospital casters with locking caster





PHK24

New Design IV Pole

- Dim. (Height × base diameter) (160 - 200) × 55 cm
- Made of combined ST12 and 304 steel
- Capability of utilizing for operating room for hanging serum in some surgeries
- With a unique design on base part for balance keeping and hanging several serums with high weights
- Tolerating 5 kg weight
- With 2-meter height adjustability
- With color category variability for base part for assigning to different departments of hospital
- With six hospital casters with locking caster

PHK25

Infusion Pump IV Pole

- Dim. Adjustable sheet (Height × base diameter) (85-120) × 55 cm
- Dim. Adjustable hook (Height × base diameter) (180-250) × 55 cm
- Made of combined ST12 and 304 steel
- Capability of utilizing for operating room, emergency and other units
- Possibility of infusion pump installation on holders of IV pole
- Including infusion pump holder
- With movable handle
- With a unique design on base part for balance keeping and hanging several serums by high weights (max. 5 kg for each hanger)
- With color category variability for base part for different departments of hospital
- With six hospital casters with locking caster





PET26

Operating Room Wheeled Waste Bin

- Dim. (Diameter) 45 cm
- Made of stainless steel 304
- Capability of utilizing for operating rooms, resuscitation , and treatment rooms
- Including a full stainless steel body with 20 liters volume and a transportation handle
- With a unique design by steel guards and compressed foal coating to prevent from damages to other medical tools as well as removing noise pollution at the time of impact
- With four special hospital wheels



PET28

Full Stainless Steel Slipper Cabinet

- Dim. (Height × length × width) 170 × 100 × 55 cm
- Made of stainless steel 304
- Capability of utilizing for preadmission of operating rooms, dialysis room, preadmission of C.C.U and I.C.U and other vital units of hospital
- Having the capability of placing max. 24 pairs of shoes or slippers on 6 floors
- With four special hospital wheels including two locking casters

PCA25A

Floor Cabinet (with base and sheet)

- Customizable sizes
- Made of stainless steel 304
- Capability of utilizing for utility solid room, cleanrooms and treatment rooms
- Capability of utilizing in CSSD and CSR departments in clinics and hospitals
- Capability of utilizing in orthopaedic room
- Capability of utilizing for hospital pantries and other public areas
- Including full stainless steel doors by hinge door damper
- Having unique design for hospital infection control
- With height-adjustable bases
- With double-layered full stainless steel sheet



PCA25B

Sloped Roof Wall-Mounted Cabinet (with doors)



- Customizable sizes
- Made of stainless steel 304
- Capability of utilizing for utility solid room, cleanrooms and treatment rooms
- Capability of utilizing in CSSD and CSR departments in clinics and hospitals
- Capability of utilizing in orthopaedic room
- Capability of utilizing for hospital pantries and other public areas
- Including full stainless steel doors by hinge door damper
- Having unique design for hospital infection control
- Capability to install lock for all doors
- Capability of installing full stainless steel frame by toughened artificial glass

PCA25C

Sloped Roof Wall-Mounted Cabinet (without doors)



- Customizable sizes
- Made of stainless steel 304
- Capability of utilizing for utility solid room, cleanrooms and treatment rooms
- Capability of utilizing in CSSD and CSR departments in clinics and hospitals
- Capability of utilizing in orthopaedic room
- Capability of utilizing for hospital pantries and other public areas
- Having unique design for hospital infection control



PET32

Double-Layer Pedal Bucket

- Dim. (Height × length × width) 57 × 30 × 30 cm
- Made of stainless steel 304
- Special double-layer design for using in operating room, emergency room and other units
- 30 liters capacity
- With door damper
- Including four special hospital casters with locking caster



PET23

L-shaped Handle

- Dim. (Length × width) 36 × 36.5 cm
- Made of stainless steel 304
- Capability of utilizing for toilet services and hospital bathrooms
- With a special design on bent parts
- Including integrated and seamless body
- Compromised to unique designs for various usages of user



PET24

Stainless Steel Handle

- Dim. (Length) 60 cm
- Made of stainless steel 304
- Capability of utilizing for toilet services and hospital bathrooms
- With a special design on bent parts
- Including integrated and seamless body
- Compromised of unique designs for various usages of user



PET27

Laboratorial Shelf

- Dim. (Height × length × width) 5 × 25 × 15 cm
- Made of stainless steel 304
- Capability of utilizing for the sampling spaces and toilet services
- With two separated spaces for sampling



PET29A

Single Foot Step

- Dim. (Height × length × width) 20 × 40 × 25 cm
- Made of stainless steel 304
- Capability of utilizing in front of patient's bed in different hospital units, such as resuscitation room, emergency room, operating department and so fourth
- With a unique design for keeping the patient's balance while going up/down and preventing from slipping
- With a special plastic insole in order to prevent from slipping
- Tolerating 300 kg weight on the most unbalanced point of the product
- Special design of this product has provided this possibility that it does not have any movement while using



PET29B

Single Foot Step



- Dim. (Height × length × width) 10 × 60 × 40 cm
- Made of stainless steel 304
- Ability to use in operating rooms in order to use by physician's assistant
- With a wide insole sheet and having high rate of balance for ease of use
- Equipped with basis insole made of Zellamid® which will protect foot step from slipping and movement while using

PET29C

Double Foot Step



- Dim. (Height × length × width) 40 × 40 × 50 cm
- Made of stainless steel 304
- Capability of utilizing in front of patient's bed in different hospital units, such as resuscitation room, emergency room, operating department and so fourth
- With a unique design for keeping the patient's balance while going up/down and preventing from slipping
- With a special plastic insole in order to prevent from slipping
- Tolerating 300 kg weight on the most unbalanced point of the product
- Special design for keeping balance while moving up or down
- Including two steps for special usages



Factory: No. 79, Dolat Abad Industrial Town Tel: +98 31 45838096
Head office: No. 110, 1st floor, Qamarodoleh Bldg., Shams Abadi Ave., Isfahan, Iran, Postal
Code: 81346-54157 Telefax: +98 31 32201712 +98 31 32201723 +98 31 32219336
Tehran Branch: No. 16, Bldg. No. 429, 4th floor, Corner of 47th St., Seyyed Jamalodin Asad Abadi St.
Tehran, Iran postal code: 14349-33141 Telefax: +98 21 88066663
Iran's south regional distribution office (Shiraz Branch): No. 302, 3rd floor, Kasra Bldg., Corner of
Mollasadra St., Moadel Ave., Shiraz, Iran Telefax: +98 71 32300463 & +98 71 32300465
Email: info@radteb.com www.radteb.com