



**Partosimin** Engineering Company

**Partosimin  
international  
agency**

Oil, Gas  
Petrochemical  
& Power Plant  
EPC and Equipment  
Supplier



# COMPANY PROFILE

Established in 1998, NOGARAYAN ANDISHE TRADING. was founded in order to contribute towards the development of trading. The first job of our company for electrosurgical equipment, patient monitors, surgery lights, hospital equipment, surgical equipment, emergency medical equipment and a variety of used medical equipment. That is still in progress until now.

May we take this opportunity to briefly introduce Group of Companies as being the major leading supplier & exporters of components & equipment to serve the customers in middle east for over 20 years. we have a customer in middle east.

In 2006 PARTO SIMIN TRADING was found in parallel to develop in business.

Now We have the pleasure to introduce our company a leader project package supplier to industries in UAE with core business in oil, gas, petrochemical market & Power plant, cement, Iran. We have Five activity departments of instruments, electrical, mechanical( fix, rotary, valve),t and Electronic systems.

we supply all brand that my customer wants for all section.

Also We would like to inform you that,We specialize in providing engineering solutions from Design, Supply, Installation & Commissioning to Maintenance of systems in these fields.

- Fire Protection & Integrated ELV Systems
- electronic device such as battery charger, UPS, Inverter, Robotic, automation... and anything that customer want with reverse engineering.
- Water Treatment Systems
- mechanical pipe, fitting, conveyors spare part, belt, Rubber, Valve, Turbine (Gas & steam) spare part, ...

The exceptional effort of our management staff and affiliate groups, combined with the team work of professional engineers and skilled technicians built the foundation that enabled us to excel and to prosper throughout the years of our operations. For more than 27 years we take pride in providing products of superior value in terms of quality and service.

We would like to invite your esteemed company to kindly cooperate with us.

Your kind attention and prompt action is highly appreciated.

Best Regards



**Partosimin**  
Engineering Company

## Partosimin Partnership







# TOTAL SENSOR SOLUTION PROVIDERS

 **Pyrosales**  
*Total Sensor Solutions*



We measure it.



**CHINO**





# TOTAL SENSOR SOLUTION PROVIDERS

**Pyrosales has established a worldwide reputation as a specialist manufacturer of standard and precision temperature measurement sensors.**

We maintain an approved quality management system to ISO9001, which ensures all products provided meet stringent quality requirements. Detailed procedures ensure the products manufactured are always high quality.

Pyrosales design, custom-engineer, and market a comprehensive product range. We also have extensive technical expertise with a dedicated team of sales and support staff.

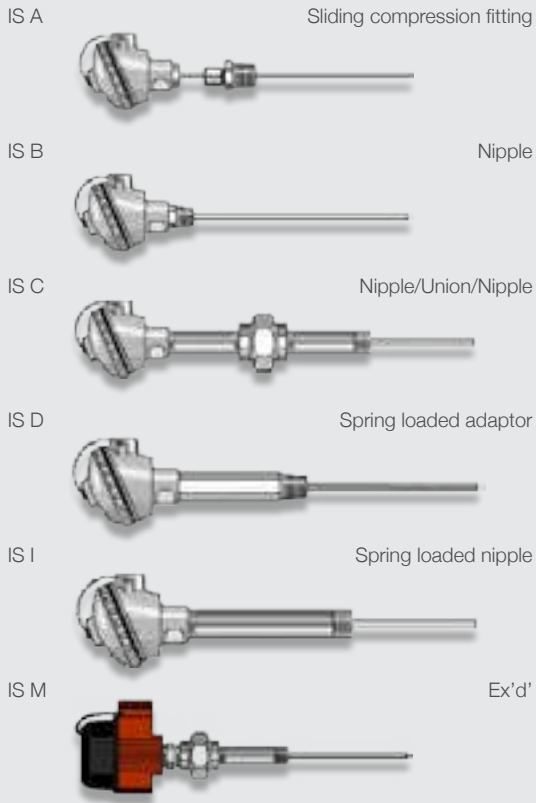
Our technical expertise, gained from over 40 years of supplying superior service to both Australian and International industry, is the best in Australia.

For more information, visit our website at [www.pyrosales.com.au](http://www.pyrosales.com.au)

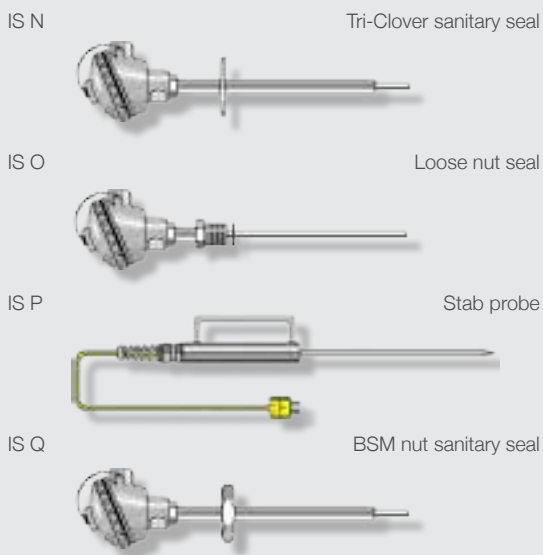


The Australian industry experts in the design and manufacture of temperature management solutions.

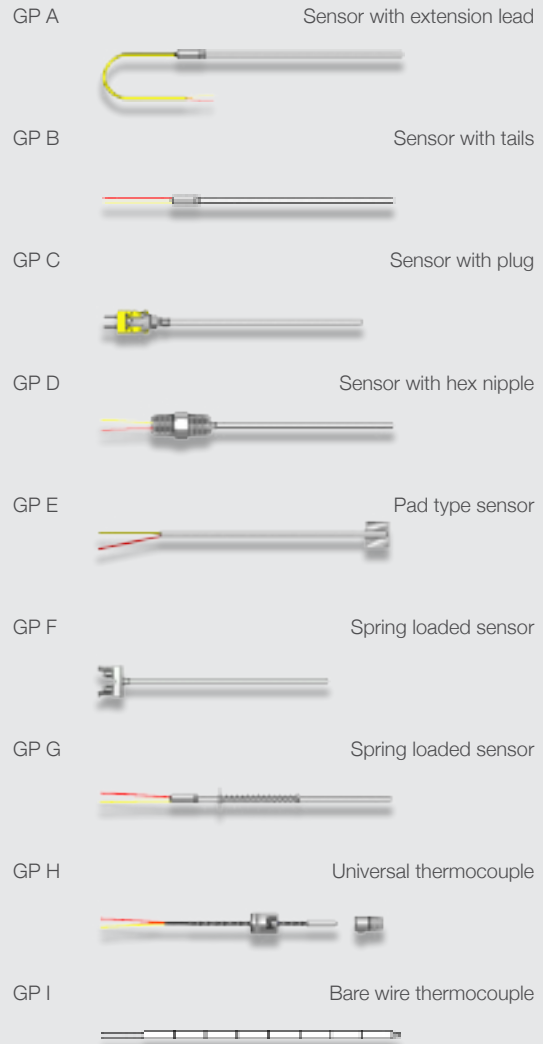
### INDUSTRIAL SENSORS (Thermocouples)



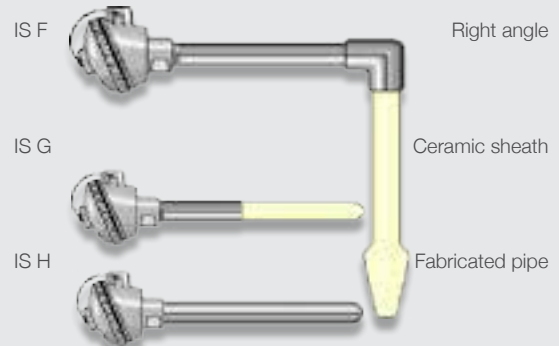
### FOOD INDUSTRY SENSORS



### GENERAL PURPOSE SENSORS



### HIGH TEMPERATURE SENSORS





### THERMOWELLS (Manufactured to your specifications)

TW-SP/TW-SPF Parallel machined or fabricated



TW-ST Tapered



TW-SS/TW-SSF Step down machined or fabricated



TW-ST\* \*Tapered c/w lagging extension



TW-WT Weld-in

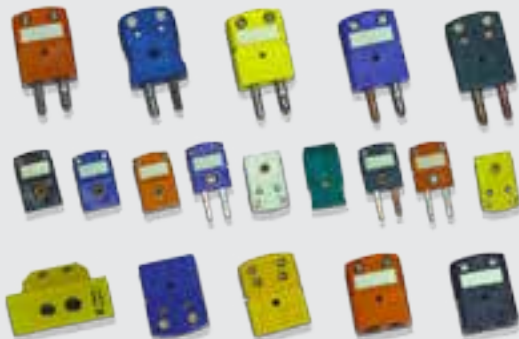


TW-FT Flanged



### PLUGS AND JACKS

- Standard and high temperature
- Miniature
- Panel mount jack
- Ceramic Material



### TAPE INSULATIONS

	Max Temp °C
• TFE/TFE .....	260
• Polyimide/Twisted .....	316
• Polyimide/Polyimide .....	316

### BRAIDED INSULATIONS

	Max Temp °C
• SERVTEX™/SERVTEX .....	288
• Vitreous Silica/Vitrious Silica ...	982
• Glass/Glass .....	482
• Enamel/Glass/Glass .....	482
• Glass/Glass .....	482
• Glass/Glass .....	482
• Glass/Twisted .....	704
• Glass/Glass .....	704
• Ceramic Fibre/Ceramic Fibre ..	1204



### EXTRUDED INSULATIONS

	Max Temp °C
• PVC/PVC .....	105
• PVC/Ripcord .....	105
• FEP/FEP .....	204
• FEP/Shield/FEP .....	204
• PVC/Shield/PVC .....	105
• Tefzel™/Tefzel™ .....	150

**MULTIPAIR CABLES IN ALL CALIBRATIONS AVAILABLE ON REQUEST**

### CONAX - COMPRESSION SEAL FITTINGS



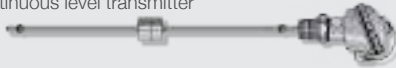
- Soft sealant technology provides secure compression seal
- Continuous tension in the torqued body acts like a spring to maintain compression on the sealant and maintain a positive seal throughout the temperature cycle
- Soft sealant technology allows replacement and adjustment of the sealed element. Not possible with epoxy and glass-to-metal sealing
- No leakage
- Conax uses mechanical fittings with internal sealant material that is compressed for a completely tight fit
- Replaceable sealant used in Conax Technologies sealing assemblies allows repeated use of the same fitting
- Replacement sealants are available in Neoprene, Viton, Teflon, Lava or Grafoil, depending on the sealing assembly type





### LEVEL

Screwed continuous level transmitter



Flanged continuous level transmitter



Screwed multi-float level switch

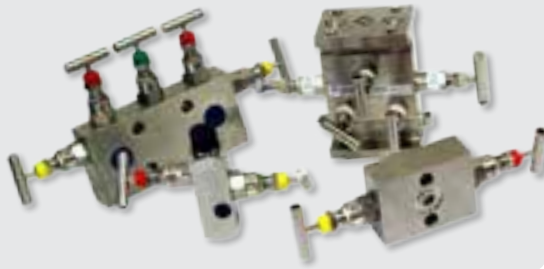


Flanged multi-float level switch



### MANIFOLDS AND VALVES

- Block and bleed
- 2, 3, and 5 valve



### PRESSURE

- Bourdon pressure gauge
- Chemical seal
- Diaphragm seal
- Capsule seal
- Safety pattern
- Pressure switches
- Differential pressure gauges



### SPECIAL PROTECTION SHEATHS



Max Temp °C

- Alsint (Re-crystallised alumina) ..... 1600
- Pythagoras ..... 1500
- Sillimantint ..... 1600
- Metal ceramic (PyroSheath LT-1)  
Copper, lead, brass, zinc and sulphurous gases ..... 1375
- Hexoloy®  
Corrosion/erosion resistant to ..... 1900
- Sialon  
Aluminium applications ..... 1250
- Series 1100  
Aluminium, zinc, and galvanising applications ..... 740

### FLOW

- Orifice plates
- Restriction orifice
- Integral orifice
- Flow Nozzles
- Venturies
- Pitot tubes





## CHINO

### GRAPHIC RECORDER KR3000 SERIES

The KR3000 Series are easy to operate, network-compatible, paperless recorders with high visibility 12.1" TFT colour LCD display and touch panel operation system.

- Large-sized, high visibility display with various display functions
- Combination display for selected 4 screens is available
- Large capacity of data memory and various recording methods
- High-speed recording of approximately 100ms for 48 points and high accuracy of  $\pm 0.1\%$
- Monitor via web browser on multiple computers, FTP transfer of data and email notification
- Multi-point recording with high speed/high accuracy



### TP-L SERIES

#### Thermal Imaging Sensor

The TP-L series is a compact, mountable, thermal imaging sensor utilising a thermopile array detector.

- Easy-to-use and implement
- 2000 pixel resolution
- Builtin alarms
- IP65.NEMA4



### C800/R800 SERIES

Standard resistance thermometers and standard thermocouples for calibration of thermocouples.



## HAND HELD INSTRUMENTS

Right angle surface probe

Immersion / stab probe

Surface probe

TES 1314 Hand-held infrared and thermocouple 0-500°C

EMT888 Electronic dual sensor thermometer

Digital thermometer Single or dual channel



## FIRE SURVIVAL MI CABLE



Mineral Insulated (MI) cable provides the highest degree of fire protection for emergency back-up power supply systems, emergency equipment, and fire alarm systems.

In the event of a fire, electrical power and communication is preserved for critical, life safety circuits.

MI Cable allows essential safety mechanisms, such as fire pumps, smoke extraction fans, emergency lighting, exit signs and voice communication systems, to remain in operation during a fire, allowing for safe evacuation and more efficient firefighting.



We measure it.



### ENTRY LEVEL/MID-RANGE THERMAL IMAGING CAMERAS

Testo has a history of offering the best quality measuring solutions at prices that don't break the bank.

The 868, 871 and 872 are great value thermal imagers that offer plenty of functionality. Each model has, a measuring range from  $-30^{\circ}\text{C}$  to  $+650^{\circ}\text{C}$ , high resolution and image quality, wireless connectivity to Android and iOS apps for fast download of images to your device and automatic sensing of emissivity.

Testo ScaleAssist automatically sets the optimum thermal image scale which prevents interpretation errors and makes infrared images comparable in spite of altered ambient conditions.

The testo 871 and testo 872 can be additionally connected wirelessly with testo 770-3 Clampmeter. This allows fast and clear identification of where exactly what load a switching cabinet is running.



### PROFESSIONAL CLASS THERMAL IMAGING CAMERAS

For more advanced requirements the Testo 882 (IR resolution  $320 \times 240$ ) and 890 (IR Resolution  $640 \times 480$ ) offer high infrared resolution and lower thermal sensitivity to identify even the smallest change in temperature.

They offer special measuring modes including moisture image or high temperature option which make them ideal for a wide variety of applications.

Great for the building sector, water damage restoration, maintenance of mechanical and electrical installations, precise high-temperature measurements, prevention of mould, plus more.





## RKC

### SB1



SB1 is a 1 channel temperature controller with built-in solid state relay (SSR) designed for flexible heating solutions, such as heat trace of pipelines (by controlling jacket heater etc.). Instrument can be wired directly to heaters.

- Direct connection to Load (with built-in SSR)
- Can be installed in a small space or into a pipe
- Easy connection (with a complete connector)
- Power saving by SB link
- Load Power Shutoff Function and Fuse

### HA SERIES

Resin Pressure Digital Controller 930 and Extruder.

The HA930 strain gauge input make it ideal for melt pressure control. Featuring high speed sampling and control at 0.025 seconds (40Hz), PID parameters set in 1/100 unit, these controllers provide stable control for improved quality of extruded products.

- Ultra high-speed sampling 0.025 sec
- Pressure and temperature control with a single instrument
- 7 inputs and 5 outputs
- RKC IR software to enable a controller parameter setup with PDA



### FB SERIES

The FB Series is a high-performance process controller, with a more advanced Brilliant II PID, auto-tuning, advanced tuning, selectable sampling cycle time of 0.05 / 0.1 / 0.25 seconds and 0.1% of accuracy in short-depth housing.



**CB/RB SERIES** The CB/RB Series is a state-of-the-art, user-friendly temperature controller.

- RKC self-tuning
- Stable control (0.3% measurement accuracy)
- Clear and easy-to-read large LED screen
- RUN/STOP, RAMP/SOAK functions
- Digital communications RS-485
- Dustproof and waterproof structure IP66 (IP65)

### SA100/SA200

RKC's SA 100/200 is a single loop controller which can be simply mounted on a DIN rail with a rail mounting socket or panel mounting frame.

- Self-tuning and auto-tuning
- Heat/cool PID action
- Can communicate digitally with both MODBUS and RKC protocols
- Retransmission output
- Heater break, loop break alarm
- Temperature alarms



### PF900

The PF900 is a ramp/soak process and high performance temperature controller with large memory (stores up to 1024 segments). Connect up to 3 analogue outputs for controlling devices, such as motorised valves.

- New control algorithm RSS (Ramp Soak Stabilizer)
- Maximum of 3 point program pattern outputs
- The PF900 can store up to 1024 segments
- High intensity display
- Two types of signal modes
- Satisfies versatile applications
- Memory group
- Collaborative program operation
- (Inter-controller communication)
- Front loader interface + Programming tool







**S** TECHNOLOGIES

Analogue and digital temperature transmitters, all with a 5-year Warranty. Available in either a 'hockey-puck' style or in a 'Din-rail' mount package. Optional digital indicator on the programmable transmitters.

**PIE** PROFESIONAL INSTRUMENTS EQUIPMENT

**CALIBRATORS**

High quality, hand-held industrial calibrators for every application.

- Milliamp Source and Read
- Multifunction calibrator
- Temperature sensor source and read

**INFRARED RADIATION THERMOMETERS**

Infrared radiation (IR) thermometers measure temperature without contact. The object being measured essentially broadcasts information about its temperature constantly.

- Single Colour Pyrometers
- Two Colour Pyrometers
- Focusable Pyrometers
- Fibre Optic Pyrometers
- Special Pyrometers
- Software and accessories

**PROCESS HEATERS**

Process heaters are available in a variety of types, to suit a wide range of applications. Our range includes cartridge heaters, band heaters, coil heaters, strip heaters, flexible tubular heaters and box heaters.

**NAGMAN**

Quality calibration and testing equipment, including black body systems, stirred baths, dry block calibrators, pressure testers and dead weight testers.

**WAVE INDUSTRIES**

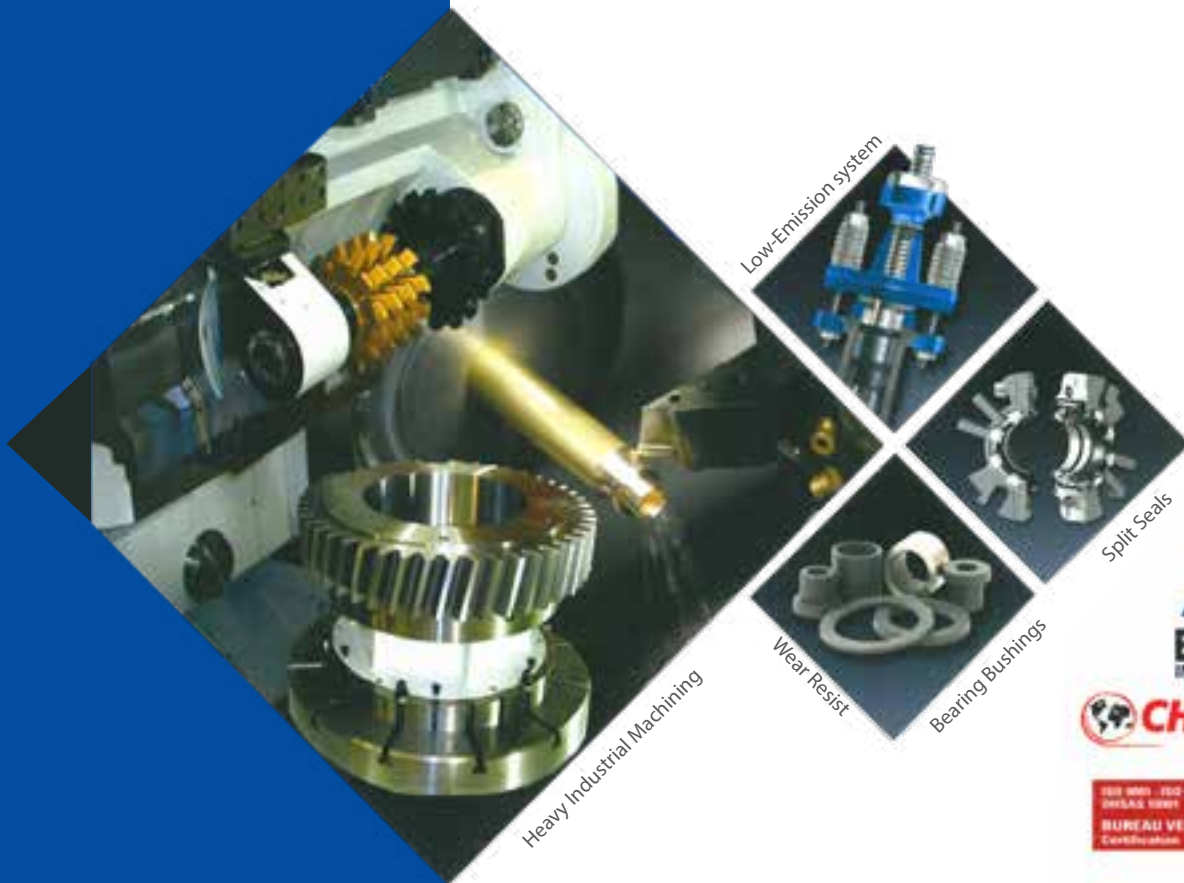
**DATA LOGGING**

Testo offers an extensive range of user-friendly data loggers for the monitoring of temperature and humidity. The range includes mini temperature data loggers, USB data loggers for logistics and stand alone compact data loggers to be used in various applications. Continuous monitoring solutions available – wireless and WIFI Cloud options from any device.

**THE HAWK-EYE 800**

- Onsite and remote monitoring, control and data recording
- Suitable for small to medium applications
- 8 configurable analogue inputs, 4 derived inputs, tough IP65 enclosure, built in 10.6" high colour, high resolution touch screen and perceptive software
- The Hawk - Eye 800 is available in 3 models and can be made to your specifications





**Since** its founding in the 2010, succssfully met the critical needs of its diverse customer base, providing high quality & reliability precision machining & fabricattion services for heavy industrial rotating & static equipment.

## VISION

Pioner in the sector, increasing customer count on mechanical solution, increase equipment reliability, optimize energy consumption and comprehensive technical support and utmost customer satisfacttion.

## MISSION

Devotes every efforts to acheive proffessional maintenance,repair & fabbricattion planning, using genuise spare and consumables, optimization and selection of professionally qualified workforce, safe and environmentally friendly working atmosphere.

## INTERNATIONAL ACCREDITATION

Certified and Registered for Quality Management System ISO 9001 :2008, Environmental Management System ISO 14001: 2004 and Occupational Health & Safety Management System OHSAS 18001 : 2007 and keep this context for continual improvement.



## MECHANICAL / MECHINING SERVICES

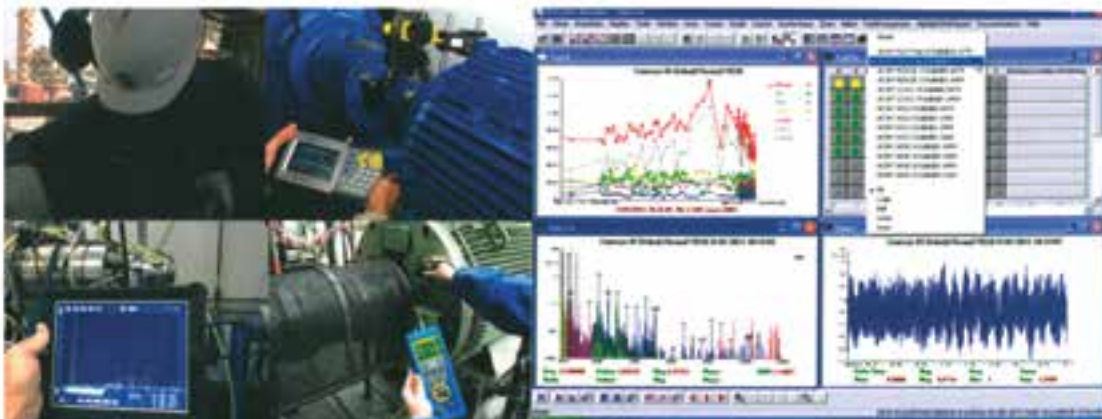
### Rotating / Static Equipment (on-Site)

Repairing and Machining of all heavy industrial rotating and static equipment.  
Modern and advanced technology in adapting repairing an machining process and in process Quality Control.  
Highly qualified, experienced and reliable Engineer, Supervisors and Technician.



## MECHANICAL / RELIABILITY OFF-SITE SERVICES

Site Observattion, professional approach in identifying mechanical context at costomer's site, trouble shooting in set-up tipe frame, employing right and reliable spares and consumable, increasing equipment reliability and reducing environmental emissions, at least mobilization time and cost



## A.W.CHESTERTON USA'S CERTIFIED SERVICE CENTRE MECHANICAL SEAL SERVICES:

Internationally recognized and certified well equipped mechanical seal service center set up by A.W. CHESTERTON USA in the Partosimin's Workshop facility, catering all needs, solutions and repair all types an sizes of Heavy Industrial machinery Mechanical's.



## A.W.CHESTERTON USA'S CERTIFIED SERVICE CENTRE HYDRAULIC SERVICES

A.W. CHESTERTON Internationally recognized and certified well equipped hydraulic service center set up and administered in the Partosimin's Workshop facility, catering all sealing solutions for equipment and machinery that drives in hydraulic power, by experienced specialists having unique ability for selecting from the best available technologies, spares and consumables to fit customer needs











## Custom Air Conditioning,

### Ventilation & Pressurization Equipment Manufacturer

- Medium and Large Body Wall Mount Air Conditioning/Heat Pump Systems
- Split Air Conditioning/Heat Pump Systems
- Packaged Air Conditioning/Heat Pump Systems
- Mini-Split Air Conditioning/Heat Pump Systems
- Windows Unit Air Conditioning/Heat Pump Systems
- Combination Air Conditioning and Pressurization Systems
- Control Panels for %100 Redundancy or N1+ Applications
- Single/Dual pressurization Fans
- Refrigeration Coolers
- Chemical Filtration
- Exhaust Fans
- Convection, Forced Air and Duct Heaters
- CAD Drawings
- Design Build Applications

NFPA , NEC, CSA, CEC, ATEX, API, USCG, CFR, ABS, DNV, and IEC



**Shield Air Solutions, Inc.** Manufactures two of the industry's best known brands Marc and Birdwell to create a leading global supplier of custom HVAC, Refrigeration and pressurization Equipment for HAZARDDOUS and CORRISIVE industrial enviroments. Shield Air Inc. team has many years of experience in providing critical HVAC solutions for extreme operating conditions.



## Customer **PROMISES**

Quality on Time and Quality with **CARE**

**C**ustom designed systems

**A**fter-the-sale technical support

**R**apid response to inquiries

**E**xceptional communication

### **Shield Air Inc. has expensive Network of GLOBAL Sales and Technical Support:**

- USA-Factory Direct
- Canada
- Mexico
- India
- Indonesia
- Malaysia
- Philipines
- Singapore
- Thailand
- Vietnam
- Korea
- Kuwait
- Saudi Arabia

Majority of Shield Air product lines (Birdwell and Marc) are third party certified by an OSHA accredited Nationally Recognized Testing Laboratory (NTRL) for several explosion proof configurations. We can comply with the requirements of most local and international codes, standards, and regulatory agencies in the world today. **NFPA (NEC, 496) CSA, CEC, ATEX, API, USCG, CFR, ABS, DNV, and IEC**



🌐 [www.partoosimin.com](http://www.partoosimin.com)

✉ [info@partoosimin.com](mailto:info@partoosimin.com)

📞 7 1 8 3 8 1 6 8 1 6

☎ 00987136488103

📠 00987136488104

📍 4th floor, Parto building  
12/2 str, Satarkhan blv  
Shiraz, Iran